

PLEASE READ
CAREFULLY



GLOBAL CANVAS CHILDREN'S ART COMPETITION

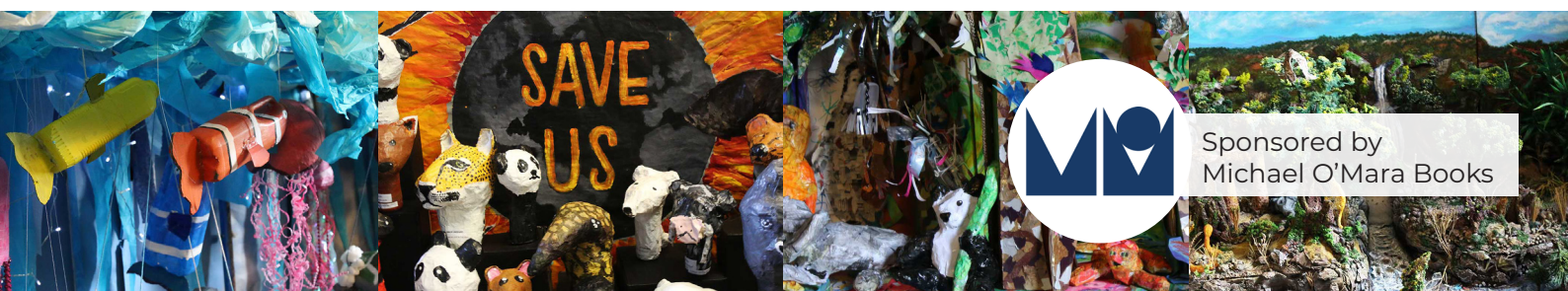
Terms & Conditions

- Each entry must comprise the work of children all of whom are aged 16 and under.
- Each entry must interpret the theme '**Healing Nature - A Planet on the Edge**'.
- All entries must be received by **Wednesday 24 February 2021**.
- Overall and category winners will be awarded group prizes.
- The decision of the judges will be final.
- It is the responsibility of the shortlisted winners to ensure that all materials for their display are brought to and set up at the Natural History Museum between 10am-12pm on Thursday 25 March 2021 and removed after the event.
- **Overseas or long distance entries:** Once you have entered, you will be contacted about your display preferences should you be shortlisted for the final. Should it not be possible to display your entry on the day, we will represent your entry by displaying your submitted photograph, and may use elements of your video/presentation, for judging.
- Overall and category winners will have their submitted video/presentation played at the Natural History Museum. Finalists may also wish to prepare a presentation for student delivery on the day.
- **Please ensure that any student who appears in a video or presentation submitted has appropriate permissions for their photograph/video of their image to be used.** Any video or presentation that is submitted may be used for press and publicity purposes.
- Entries will be judged on the quality of art, interpretation of the theme, level of collaboration and creativity.
- Any groups shortlisted and displaying their entry at the event may be allocated up to 12 places to attend. Additional places may become available once numbers are confirmed. Participating students/children, teachers/group leaders and/or parents may attend. Numbers are strictly limited by the capacity of the Flett Theatre.
- Any donations can be made either by cheque made payable to 'DSWF' (please include the name of the group / school you are paying for) or by calling the office Mon-Fri 9am-5pm on 01483 272323. Please note that donations are welcome but do not affect judging.

Each entry submission must comprise: completed entry form | photograph of entry | video or PowerPoint presentation of no more than 3 minutes long.

DAVIDSHEPHERD.ORG/WILDLIFE-ART/GLOBAL-CANVAS

Saba House, 7 Kings Road, Shalford, Surrey GU4 8JU | 01483 272323 | dswf@davidshepherd.org



Sponsored by
Michael O'Mara Books